

CERTIFICATE OF LOCATION OF GOVERNMENT CORNER

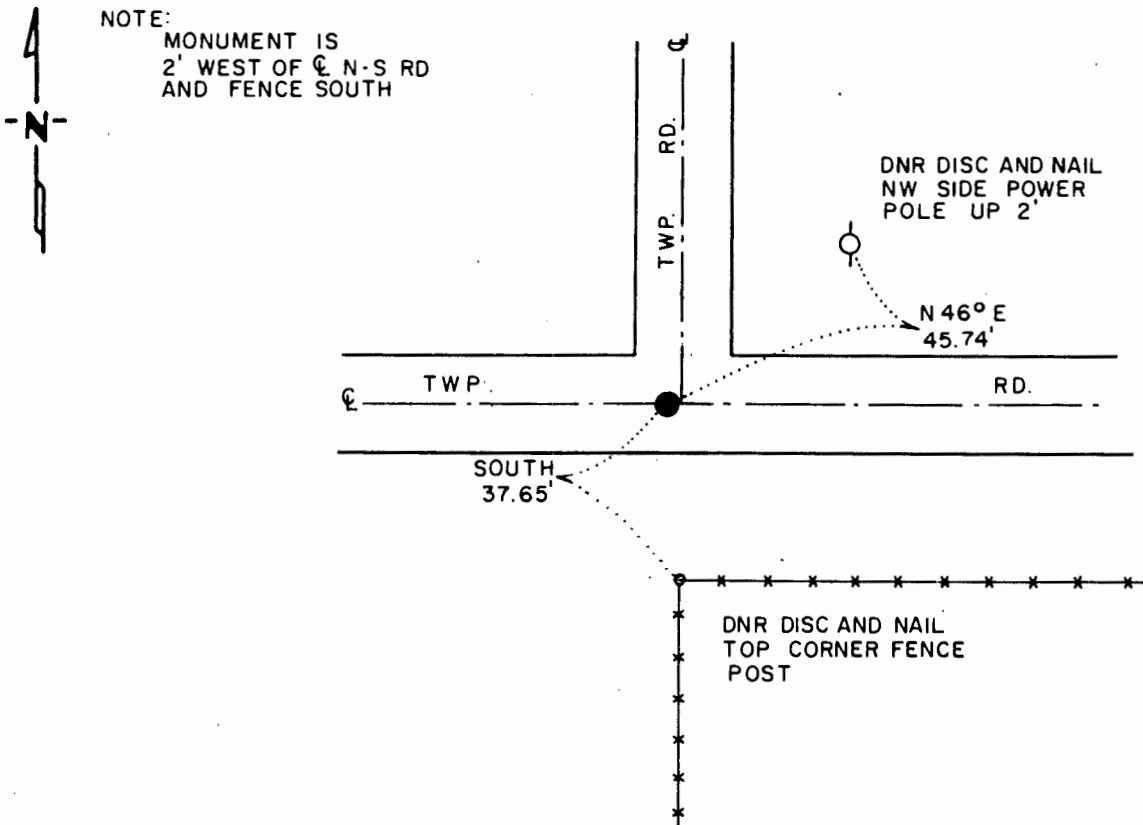
NORTHEAST Corner of Section 9, Township 108 N., Range 43 W., 5th P.M.

STATE OF MINNESOTA, County of MURRAY

At the corner location shown on the sketch:

- On 5-14-86 found a 12"x12"x12" STONE, DOWN 66"
DATE
- left monument as found, lowered monument, removed monument (explain)
- On 5-14-86 placed a 1 1/4"x1 1/4"x 20" PERFORATED STEEL TUBE WITH
DATE ALUMINUM CAP STAMPED "DNR SURVEY MARKER, DOWN 0.3"

SKETCH OF REFERENCE TIES



BEARINGS OBSERVED WITH COMPASS

Statement of evidence relative to this corner location is on back of page.

J. A. G. 7-1-86
 FILE G-383

I hereby certify that this document and the data contained herein was prepared by me or under my direct supervision.

Lowell R. Pomeroy Jr. 8-21-86
SIGNATURE DATE

Registration No. 17005

- Land Surveyor, Professional Engineer
- County Surveyor, County Engineer

OFFICE OF THE COUNTY RECORDER

County of _____

I hereby certify that this document was filed in the Co. Recorders office at _____ .M. on the _____ day of _____ A.D., 19 _____

County Recorder _____

By _____, Deputy

DOCUMENT NO. _____

Northeast Corner Section 9, Township 108 North, Range 43 West

This corner was originally established by the U. S. General Land Office survey in 1866. The government notes show corner 1 chain (66.00 ft.) North of the edge of a pond..

In May 1986, the DNR Bureau of Engineering contacted the Murray County Offices of the Recorder and Highway Engineer for corner information.

The following information was obtained from the County Recorder's Office: Surveyor's Record Book, on page 207, contains a survey of Section 9 by J. W. Woolstencroft, dated November 21, 1908. Survey states all corners were established. Corner is shown on the north side of a swamp and measures 2655 ft. from the north quarter corner Section 9. No mention is made as to what was found or set at this corner.

The above information is also contained in the County Highway Engineer's Office.

In January 1957, the DNR Bureau of Engineering traversed to the area of the corner and located a position for this corner at the intersection of roads east-west and north, and fence line south. Corner measures:

5315.0 ft. from the southeast corner Section 9
2657.5 ft. from the east quarter corner Section 9

On May 14, 1986, the DNR Bureau of Engineering hired a backhoe operated by Buffalo Ridge Plumbing and Heating of Ruthton. Dug a 2-ft. north-south by 8-ft. east-west hole, the center at the intersection of roads east-west and north, and fence line south. Encountered old road beds down 21" and 40", and found a 10" by 10" by 24" stone down 42" over a 12" by 12" by 12" stone down 66" at natural ground. Left stones as found and set an 8" spike on east side of top stone. Stones measure:

5319.73 ft. from the southeast corner Section 9
2653.47 ft. from the north quarter corner Section 9
on center line east-west road
2 ft. west of center line road north
in line with fence south

Accept the stones as the location of the corner.

Traverse information is available from the DNR Bureau of Engineering.